



Europäisches Patentamt
European Patent Office
Office européen des brevets



Publication number:

0 219 368 B1

12

EUROPEAN PATENT SPECIFICATION

49 Date of publication of patent specification: **11.03.92** 51 Int. Cl.⁵: **C07K 15/28**

21 Application number: **86401898.1**

22 Date of filing: **29.08.86**

Divisional application 91200192.2 filed on
29/08/86.

54 **Monoclonal antibodies.**

30 Priority: **30.08.85 FR 8512946**

43 Date of publication of application:
22.04.87 Bulletin 87/17

45 Publication of the grant of the patent:
11.03.92 Bulletin 92/11

84 Designated Contracting States:
AT BE CH DE FR GB IT LI LU NL SE

56 References cited:

THE EMBO JOURNAL, vol. 3, no. 1, 1984,
pages 29-34, IRL Press Ltd., Oxford, GB;
H.P.SCHMID et al.: "The prosome: an ubiq-
uitous morphologically distinct RNP particle
associated with repressed mRNPs and con-
taining specific ScrNA and a characteristic
set of proteins"

IDEM

MEDICAL LABORATORY SCIENCES, vol. 36,
1979, pages 329-338, The Institute of Medical
Laboratory Sciences; A.D.BLANN: "Cell hy-
brids: an important new source of antibody
production"

73 Proprietor: **PRO-SOMA SARL**
9, Rue Larrey
F-75005 Paris(FR)

72 Inventor: **Scherrer, Klaus**
9, rue Larrey
F-75005 Paris(FR)
Inventor: **Grossi de SA, Maria-Fatima**
6, Rue Eugène Kleynhoff
F-94025 Gentilly(FR)

74 Representative: **Hermans, Franciscus G.M. et**
al
Patent Department AKZO N.V. Pharma Di-
vision P.O. Box 20
NL-5340 BH Oss(NL)

EP 0 219 368 B1

Note: Within nine months from the publication of the mention of the grant of the European patent, any person may give notice to the European Patent Office of opposition to the European patent granted. Notice of opposition shall be filed in a written reasoned statement. It shall not be deemed to have been filed until the opposition fee has been paid (Art. 99(1) European patent convention).

CHEMICAL ABSTRACTS, vol. 104, no. 17, 28th April 1986, page 276, no. 144328b, Columbus, Ohio, US; C.MARTINS DE SA et al.: "Prosomes. Ubiquity and inter-species structural variation" & **J. MOL. BIOL.** 1986, 187(4), 479-93

BIOL. ABSTR./REVIEW-REPORTS-MEETINGS, vol. 31, &NUM;59220, M.F. DE SA et al.: "Ubiquitous presence and localization of prosomes in cells of various species probed by specific monoclonal antibodies" & **BIOL CELL** 1985 (RECD. 1986). Vol. 54, no 3 p17A

PROC. NATL. ACAD. SCI., USA, vol. 78, no. 5, May 1981, pages 2737-2741; E.A.LERNER et al.: "Monoclonal antibodies to nucleic acid-containing cellular constituents: Probes for molecular biology and autoimmune disease"

BIOCHEMICAL AND BIOPHYSICAL RESEARCH COMMUNICATIONS, vol. 123, no. 1, 30th August 1984, pages 345-351, Academic Press, Inc.; ARTURO MARTI et al.: "The small nuclear ribonucleoproteins that react with anti-Sm and anti-RNP antibodies"

THE JOURNAL OF BIOLOGICAL CHEMISTRY, vol. 259, no. 3, 10th February 1984, pages 1827-1833, The American Society of Biological Chemists, Inc.; G.P.LESER et al.: "Monoclonal antibodies to heterogeneous nuclear RNA-protein complexes"

Description

The present invention relates to monoclonal antibodies against prosomal proteins, to cell lines producing these antibodies, to a method for immuno-chemical diagnosis, and to a diagnostic reagent for use with this method.

Prosomes are ribonucleoprotein (RNP) complexes or RNP particles which have recently been demonstrated by biochemical methods and have been visualized by electron microscopy, in particular in the cytoplasm of duck and mouse erythroblasts and in human HeLa cells [defined by SPOHR et al., *Eur. J. Biochem.* 17, 296-318, (1970)]. To this end, reference may be made to the paper by Schmid et al. in the *EMBO Journal* 3(1), 29-34, (1984), cited in the present description by way of reference.

The molecular weight of prosomes has been estimated at approximately 600,000 daltons. Prosomes are extremely stable complexes. Indeed, they are resistant to ribonuclease, to protease K, to solutions of caesium ions greater than 1M and, in the cells mentioned above, to 1% strength solutions of the detergent "Sarkosyl" (sodium N-lauroylsarcosinate) which can be shown to dissolve the other constituents of repressed mRNPs.

These complexes, which have a sedimentation coefficient of approximately 19S, contain, according to the cell type and species, 1 to 12 small RNAs and one or more members of a characteristic population of proteins which contains both species-specific members and members common to all species. The molecular weight of these member proteins varies between 19,000 and 50,000, and the number of molecules of proteins per prosome is of the order of 20.

The population of prosomal proteins comprises at least 25 distinct members; in consequence, a minimum of approximately 25 different types of prosomes can exist.

Up to the present time the physiological and diagnostics significance of the prosomes has remained unclear. However, now we have indications that prosomes may be involved in many vital physiological processes related to the differentiation of cells and even of whole organisms, to the communication between cells; and to autoimmune disease.

For example, we have found now a differential distribution of prosomes, indicating a physiological specificity which correlates with the functional state of the cell and of the organism during embryonic development and cellular differentiation.

More specifically, in the epithelium of embryos, a certain type of prosomal antigen could be demonstrated in the nucleus; then subsequently in the cytoplasm and then in sectors of the cytoplasm, according to the different stages of differentiation.

Another remarkable finding is that in certain instances prosomes are present which very probably are composed exclusively of multiple copies of a single protein component linked to the prosomal RNA. We have also found that not only the quantitative distribution of the prosomes varies with the stage of erythroblast differentiation but that furthermore the various prosomal proteins differ in their distribution through the subsequent differentiation stages, although the proteins in the nucleus are found to have the same molecular weight as those in the cytoplasm.

It can be shown that prosomes are forming part of a network that spans the cell from the chromosome to the plasma membrane and beyond. This suggests a correlation between the cells dynamic architecture and consecutive steps of the cascade of gene expression and control - the main role attributed to the prosomes. Determination and in particular differential detection of prosomes and prosomal proteins then should be considered as a powerful tool for diagnosing disorders associated with disturbance of gene control - as is, for example, the case with cancer.

Prosomes hence represent a new class of cell components which, by their structure and presence, reflect the physiological state of a given cell.

It has hence proved necessary to have means at one's disposal for identifying prosomes, for example in order to:

A) for experimental purposes:

- 1) analyse the detailed structure of living human or animal cells;
- 2) study the control of gene expression after transcription; and

B) for diagnostic purposes:

- 1) define a disturbance of the prosomal immune phenotype of a given cell in relation to a pathological state or a pathogen;
- 2) identify cells in relation to their state of differentiation and development, for example identify the cells of embryonic type among adult cells.

Therefore the present invention is concerned with monoclonal antibodies directed against prosomal proteins, which are useful, for example, in the detection of prosome-related phenomena, and can be applied also therapeutically in certain prosome-related disorders

Therefore, the present invention is also concerned with a method for detecting prosome-related phenomena, and in particular for diagnosing prosome-related disorders in a sample comprising incubating said sample with monoclonal antibodies specifically directed against at least one prosomal protein, wherein the monoclonal antibodies are directly or indirectly provided with a label, and subsequently determining the binding of said label to

the prosomal protein and/or to said monoclonal antibodies.

In the method according to the invention the sample either can be tissue material (preferably a section thereof suited for microscopic examination) or a liquid medium (such as blood or a fraction thereof, urine or lymphoid fluid) derived from the living being to be diagnosed, or in some instances the complete living being itself (e.g. in imaging).

Therefore the present invention is also concerned with the diagnostic reagent comprising a monoclonal antibody specifically directed against prosomal protein, coupled to a label.

The label for use with the method according to the invention may be any label generally used in immuno-assays. Examples thereof are radio-active atoms or compounds, enzymes, particles such as erythrocytes, latex particles, dispersed sol particles of dyes, metals or metal compounds, chromophores, fluorophores, etc. The label can be bonded directly or indirectly to the monoclonal antibodies. A direct bond can be established preferably by a covalent linkage, optionally using a linker molecule. An indirect linkage between label and monoclonal antibody can be established for example by reacting the monoclonal antibody with a labelled specific antigen, or with second antibody or fragment thereof or with protein A or a similar compound, or for example by using a monoclonal antibody to which avidine or biotin is bound and reacting this with labelled biotin or avidine, respectively.

According to the invented method applied to a liquid sample, any type of usual immuno-assay can be applied. To name a few: sandwich-assay, solid-phase-competition-assay, agglutination-assay or agglutination-inhibition-assay. In a sandwich-assay, generally the antigen to be detected is sandwiched between an antibody immobilized or to be immobilized to a solid surface on the one hand and an antibody which is labelled or to be labelled on the other hand. In a solid-phase-competition the antigen to be determined for example can be incubated with a solid-phase-bound antibody and a labelled antigen. In an agglutination-assay the antigen to be determined is incubated with particle-bound antibodies which will aggregate and form a precipitate upon antigen binding. On the other hand in an agglutination-inhibition-assay particle-bound antigens as well as free antibodies may be incubated with the antigen to be determined.

In cases wherein tissue material is used as a sample with the method according to the invention, this tissue material optionally first can be fixed and subsequently can be incubated with the monoclonal antibodies which are labelled or to be labelled, optionally after first fixing the material by chemical or physical means.

The labels used according to the invention are observed for their binding after incubation either visually or by instrumental methods depending on the type of label and type of assay used.

The monoclonal antibodies specifically directed against prosomal proteins are produced by biologically pure cell lines of immortalized antibody-producing cells.

Such immortalized antibody-producing cells can be obtained according to any of the various methods which are known in the art, and which generally go through the steps of 1. inducing suitable cells such as lymphocytes to production of specific antibodies; 2. immortalizing said cells; and 3. selecting clones out of these immortalized cells which produce antibodies of the desired specificity and affinity. An often used method was first described in 1975 by Köhler and Millstein [Nature 256, 495-497 (1975)] and comprises immunizing mice with the antigen against which antibodies are wanted, isolating spleen cells and fusing these with mouse myeloma cells to obtain so-called hybridomas. However, animals different from mice can be immunized as well, and antibody-producing cells from other parts of the body will be suitable as well. Furthermore, these antibody-producing cells alternatively can be immortalized by other methods such as transformation of the cells with immortalizing transforming genetic material, such as Epstein-Bar virus or oncogenic DNA.

As stated above, according to the present invention the monoclonal antibodies against prosomal proteins are suitable for the detection or identification of prosomes by classical techniques of immunological determination, such as immuno-fluorescence and immunoenzymatic or radioimmunological techniques.

The application of the method according to the invention has considerable importance, both in the field of experimental research in biology and in the field of medical research, in particular cancer research, and in clinical medicine for the diagnosis of diseases by differential immune phenotyping.

For example, in the field of experimental research in biology, the method according to the invention can be used for the characterization of structure, function and synthesis of prosomes in the role of ubiquitous physiological complexes. In particular, the differential cytological localization of individual types of prosomes, according to the methods of cell fractionation and of biochemistry, or by immunofluorescence on intact cells or tissue sections, can be greatly facilitated by means of the method according to the invention.

In developmental biology, given the presence or absence of prosomes and the characteristic cytological localization of specific prosomes in cells of a specific type, the prosomal monoclonal anti-

bodies are useful for the characterization, identification and tracking of specific cells in the embryonic development, thereby enabling, as it were, a dynamic microanatomy to be established in terms of the development. Inasmuch as prosomes are involved in the differential control of gene expression, the method according to the invention can be used for analyzing the mechanisms underlying cell regulation.

In the field of medical research, the method according to the invention will, by means of differential immune phenotyping, enable a veritable atlas of distribution of prosomal antigens to be established according to the type of cells of specific tissues and the stage of differentiation of the cells. The modification of this distribution in the case of pathological conditions affecting the regulation, and hence the physiological state of the cells will be able to be identified using the method according to the invention.

For the clinical diagnosis of pathological conditions of diverse origins, the method according to the invention will offer an essential tool. In effect, this method will enable the presence and distribution of cells which deviate from the normal to be recognized rapidly in sections of tissues removed, for example, by biopsy, and in physiological fluids. In this manner, the diagnosis of pathological conditions which currently require a high degree of expertise in cytology and microanatomy may be automated by means of differential cytofluorimetry.

As regards cancer, the method according to the invention may be very useful for detecting the presence of cells in peripheral blood at an early stage of development. In effect, normal peripheral blood contains only a very small number of immature cells. In contrast, in the peripheral blood of a leukaemia patient, the presence of a considerable number of immature cells is noted.

The present invention will now be described in greater detail by means of the illustrative examples below.

Example 1

Isolation of prosomal proteins

The proteins are extracted from the prosomes by gel electrophoresis, the prosomes having been separated beforehand from the other cellular complexes by fractionation on a sucrose gradient.

The production of the prosomal proteins hence consists in:

- 1) the separation of the prosomes from the other cellular complexes by fractionation by differential centrifugation and on a sucrose gradient, and recovery of the particles which have a sedimentation coefficient of approximately 19S;

- 2) extraction of the sought protein by gel electrophoresis.

The production of duck and mouse prosomes has been described in detail by SCHMID et al. in the EMBO Journal 3(1), 29-34. (1984).

HeLa cell prosomes were obtained according to the procedure described below:

- 1) post-mitochondrial supernatants were prepared from cultures of HeLa cells according to the method described by GANDER et al. (Eur. J. Biochem. 38. 443-452, 1973);

- 2) preparations of polyribosomes and post-ribosomal particles were then prepared according to the method described by VINCENT et al. (Eur. J. Biochem., 112, 617-633, 1980);

- 3) the free cytoplasmic ribonucleoprotein complexes were fractionated by sedimentation of pellets of post-ribosomal particles resuspended in 15 to 28% strength (weight/weight) isokinetic sucrose gradients in buffer having a low salt content, the composition of which is as follows: 10 mM triethanolamine.HCl (pH 7.4). 50 mM KCl and 5 mM 2-mercaptoethanol. Such a fractionation was carried out in a "Beckman" zonal rotor of type Ti 14, for 15 h. at 41,000 rpm and at 4 °C;

- 4) the particles which sedimented within the range 15 to 30 S were then recombined and concentrated by high speed centrifugation in a "Beckman" type Ti 60 rotor for 18 h. at 48,000 rpm and at 4 °C;

- 5) the centrifugation pellet was placed on a sucrose gradient (5 to 21% weight/weight) in the presence of KCl at a concentration of 0.5 M (Rotor SW 41 37,000 rpm, 17 h., 4 °C) and the fraction which sedimented at approximately 19 S was collected.

In all cases, the prosomal proteins are extracted from these fractions and identified using known techniques of gel electrophoresis, for example, electrophoresis on one-dimensional sodium dodecyl sulphate (SDS)-polyacrylamide gels according to LAEMMLI (Nature 227, 680-685, 1970) or electrophoresis on two-dimensional gels as described by O'FARRELL et al. (Cell 12, 1133-1142, 1977). The molecular weight markers used in these electrophoretic procedures were the following compounds: phosphorylase-b(94 K), bovine serum albumin (68 K), ovalbumin (43 K), carbonic anhydrase (31 K), soybean trypsin inhibitor (21 K) and lactalbumin (14 K).

Example 2

Monoclonal antibodies against prosomal proteins

In its general aspect, the method according to the invention for obtaining hybridoma cell lines

producing antibodies against proteins of prosomes comprises the following stages:

- 1) immunization of mice with a given amount of the desired proteins prepared according to Example 1;
- 2) removal of the spleen of the immunized mice and separation of the spleen cells;
- 3) fusion of the spleen cells thereby obtained with mouse myeloma cells in the presence of a fusion promoter;
- 4) culturing of the hybrid cells obtained in a selective medium on which the unfused myeloma cells do not grow, and in the presence of suitable nutrient components;
- 5) selection of the cells which produce the desired antibody and cloning of these cells.

The first stage of this method, namely the immunization of the mice, is carried out so as to stimulate the memory of the cells for the synthesis of antibody.

The immunization protocol consists in injecting subcutaneously and intraperitoneally, three successive times at intervals of approximately 2 to 3 weeks, a given amount of the prosome protein and, 4 days before the fusion and after a rest period of 2 months, giving a booster intravenously and intraperitoneally with the same amount of prosome protein.

The amount of prosome protein used at each injection is approximately 20 to 50 μg per mouse.

The mice immunized in this manner are then sacrificed and their spleens are removed and treated for recovering the spleen cells, in RPMI 1640 medium as defined, for example, by MOORE et al. "Culture of Normal Human Leucocytes" J.A.M.A. 199, 519-524, 1967.

The fusion of the cells, which constitutes the third stage of the method of the invention, consists in mixing the spleen cells of mice immunized against a prosome protein and mouse myeloma cells, according to the technique of KOHLER and MILSTEIN [Nature 256, 495-497 (1975)] in the presence of the fusion promoter polyethylene glycol. Myeloma cells are used in a ratio of 1:10 with respect to the spleen cells.

After incubation with agitation at 37 °C for one minute in the presence of polyethylene glycol, the cells are washed in RPMI 1640 medium and re-suspended in the same medium, and are then cultured on a selective medium which is suitable for the growth of the hybrid cells.

Since the myeloma cells are devoid of the enzyme hypoxanthine:guanine phosphoribosyltransferase, they do not reproduce on media containing hypoxanthine, aminopterin and thymidine. In consequence, the selective medium for the growth of the hybridoma cells contains hypoxanthine, aminopterin and thymidine.

The cells which produce the antibody against the desired prosome protein are then selected and cloned.

The production of substantial amounts of monoclonal antibody can be carried out either by culturing in vitro the hybrid cells selected in this manner, or by injecting them into mice and harvesting, after approximately 15 days, their ascitic fluid which contains the antibody sought.

The monoclonal antibodies thereby obtained are stored by freezing at -20 °C.

Example 3

Preparation of antibodies against proteins p 27 K and p 31 K of duck prosomes

The term "protein p 27 K" and "protein p 31 K" designates in the present example the prosomal protein having a molecular weight of 27 000 and 31 000 respectively.

The duck 20S globin mRNPs obtained according to the procedure described by VINCENT et al. [in Eur. J. Biochem. 112, 617-633 (1980)] were dissociated by treatment with 0.5 M KCl into four major sub-complexes of sedimentation coefficients 4S, 13S, 16S and 19S (prosome). To obtain antibodies against the specific prosome proteins, Balb/c mice were injected intraperitoneally and subcutaneously with 20 μg of prosome (particle of sedimentation 19S obtained above) in the presence of Freund's adjuvant according to the immunization protocol defined in Example 2 above. One week after the second injection, the mouse serum was sampled and the presence of antibodies detected by ELISA and immunoelectrotransfer techniques.

Two months after the third injection, a booster was performed intravenously and intraperitoneally with the same amount of prosome and, four days later, the mice were sacrificed. their spleens removed and the spleen cells (10^8) fused with myeloma cells (10^7) of PAI mice [supplied by the laboratory of T. STAEHELIN of HOFFMANN-LAROCHE. Basle (Switzerland)] according to the method of KOHLER and MILSTEIN, using polyethylene glycol as a fusion promoter.

The cells which were producing antibodies against prosome proteins were then selected on a selective medium and cloned by the limiting dilution method.

The detection of the hybrid cells which were producing antibodies was performed by the ELISA method and the immunoelectrotransfer method.

For these two tests, the 20S globin mRNP particle was used as antigen and the positive clones, that is to say the clones which were producing antibodies against the prosome proteins p 27 K and p 31 K, were selected with this antigen.

The cell lines producing monoclonal antibodies against the p 27 K and p 31 K prosomal proteins were deposited at the Collection National de Culture de Microorganismes of the Pasteur Institute under the no.'s I-588 and I-589, respectively.

The cell line producing anti-p 27 K antibodies (indicated by the internal notation IB5) produces antibodies of the class IgG1, having an isoelectric pH of about 5.9.

The cell line producing anti-p 31 K antibodies (indicated by the internal notation AA4) produces antibodies also of the class IgG1, having an isoelectric pH of about 5.2.

Figure 1, attached, shows:

the sedimentation profile of the duck 20S globin mRNP particle in a sucrose gradient in the presence of 0.5 m KCl, observed at 254 nm (Figure 1A),

a photograph of the one-dimensional SDS-polyacrylamide gel of the proteins in the fraction of the gradient shown at A, the proteins being stained with Coomassie blue (Figure 1B). In this figure, M indicates the molecular weight markers and the zone 3-6 corresponds to the duck prosome proteins,

a photograph of the proteins in a gel homologous with the gel shown at B after transfer to nitrocellulose paper and successive reaction (ELISA) with the monoclonal antibodies against protein p 27 K (Figure 1C₁) and protein p 31 K (Figure 1C₂) according to the same procedure as that described in Example 4 below.

Example 4

Demonstration of the universal nature of the 27 K and 31 K proteins using monoclonal antibodies obtained in Example 3

To show the specificity and universality of the monoclonal antibodies against prosomal proteins the duck, mouse and Hela cell prosome proteins obtained after dissociation on a sucrose gradient in 0.5 M potassium chloride were subjected to one-dimensional gel electrophoresis and stained with Coomassie blue. The proteins of homologous gels were transferred from the gel to nitrocellulose paper by immunoelectrotransfer according to the technique of TOWBIN et al. (Proc. Natl. Acad. Sci. USA 76, 4350-4354). After the transfer, the nitrocellulose paper was immersed overnight at 4 °C in PBS phosphate buffer containing 3% of bovine serum albumin to remove the non-specific reaction products. The paper was then incubated overnight at 18 °C with the antibody against prosomal proteins obtained from Example 3 originating from ascitic fluid and diluted in PBS (1:600). The paper was then washed 4 times with PBS and then in-

cubated for three hours with a peroxidase-labelled antibody (goat antibody against mouse IgG) diluted in PBS (1:1000) and containing 10% of goat serum. After the reaction, the paper was washed again with PBS and the enzyme reaction visualized with 4-chloro-1-naphthol for 5 to 10 min.

In this experiment, the antibodies obtained in Example 3 against duck prosome protein p 27 K and p 31 K reacted positively with the duck, mouse and Hela cell prosome proteins.

Figure 2, attached, shows:

at A, a photograph of the gel from electrophoresis of the proteins of duck erythrocytes (a), mouse erythrocytes (b) and Hela cells (c), after staining with Coomassie blue, M denoting the molecular weight markers;

at B, a photograph of the proteins in a homologous gel after transfer to nitrocellulose paper and reaction with the monoclonal antibody against protein p 31 K;

at C, a photograph of the said proteins after transfer to nitrocellulose paper and reaction with the monoclonal antibody against protein p 27 K.

Example 5

Use of the monoclonal antibodies against prosomal proteins for the identification of prosomes.

Cyto-immunofluorescence studies were performed with different types of cells for identification of the prosomal antigens.

In a first stage, a smear was made of cells which were fixed using 3% paraformaldehyde in PBS for 15 minutes at room temperature. After this fixation stage, the cells were rendered permeable with 0.1% "Triton X 100" for 5 min. and then preincubated with 1% rabbit serum and 0.1% bovine serum albumin in PBS to suppress non-specific reactions.

After four successive washes with PBS, the cells were incubated for 1 h. in a moist chamber with the monoclonal antibody against protein p 27 K or the monoclonal antibody against protein p 31 K. The cells were then washed 3 times for 30 min. and incubated with a second, fluorescein-labelled antibody (rabbit antibody against mouse IgG/FITC) for 30 min. in the dark. The cells were then observed in the light microscope and the cells containing prosomal proteins determined, these cells being the fluorescent cells.

This experiment was performed with duck peripheral blood cells and Hela cells. Figures 3 and 4, attached, are the photographs of the cells observed in the microscope.

In these figures:

photograph 3A₁ is that of duck peripheral blood cells which have reacted with the antibody

against protein p 27 K;

photograph 3A₂ is that of duck peripheral blood cells which have reacted with the antibody against the protein p 31 K. In these two photographs, it is observed that the adult cells are virtually devoid of fluorescence whereas the young cells, which are fluorescent to a greater or lesser extent, show the presence of prosomal proteins in an intensity and a distribution which depend on their degree of differentiation and on the type of monoclonal antibody used;

Figure 4B₁ shows HeLa cells incubated with the monoclonal antibody against protein p 27 K;

Figure 4B₂ shows HeLa cells incubated with the monoclonal antibody against protein p 31 K. In this case, all the cells are fluorescent and hence all contain prosomal proteins. It will be noted that the staining differs according to the type of prosomal antibody used.

This experiment shows that the monoclonal antibodies according to the invention can be used for studying the differentiation of living human or animal cells.

Claims

**Claims for the following Contracting States :
BE, CH, DE, FR, GB, IT, LI, LU, NL, SE**

1. A monoclonal antibody directed against a prosomal protein, said monoclonal antibody produced by a cell line deposited with the Collection Nationale de Microorganismes of the Pasteur Institut at Paris, under number I-588 or number I-589.
2. Immortalized cell line producing a monoclonal antibody according to claim 1.
3. A diagnostic reagent comprising a monoclonal antibody produced by a cell line according to claim 2 coupled to a label.
4. A method for detecting a prosome-related phenomenon in a sample comprising:
 - incubating said sample with monoclonal antibodies produced by a cell line deposited with the Collection Nationale de Microorganismes of the Pasteur Institut at Paris, under number I-588 or number I-589, said monoclonal antibodies being directed against a prosomal protein, and being directly or indirectly provided with a label, and then determining, by means of the activity of the label, the binding of said labelled monoclonal antibodies to the prosomal protein.
5. A method for detecting a prosome-related disorder in a sample comprising:

incubating said sample with monoclonal antibodies produced by a cell line deposited with the Collection Nationale de Microorganismes of the Pasteur Institut at Paris, under number I-588 or number I-589, said monoclonal antibodies being directed against a prosomal protein, and being directly or indirectly provided with a label, and then

determining, by means of the activity of the label, the binding of said labelled monoclonal antibodies to the prosomal protein.

6. A method for detecting a prosome-related phenomenon in a sample comprising:
 - incubating said sample with a first set of monoclonal antibodies produced by a cell line deposited with the Collection Nationale de Microorganismes of the Pasteur Institut at Paris, under number I-588 or number I-589; then incubating said sample with labelled monoclonal antibodies directed against said first monoclonal antibodies; and then determining, by means of the activity of the label, the binding of said labelled monoclonal antibodies to the first monoclonal antibodies.
7. The method according to claim 4, claim 5, or claim 6 wherein said cell line is deposited with the Collection Nationale de Microorganismes of the Pasteur Institut at Paris, under number I-588.
8. The method according to claim 4, claim 5, or claim 6 wherein said cell line is deposited with the Collection Nationale de Microorganismes of the Pasteur Institut at Paris, under number I-589.
9. The monoclonal antibody of claim 1 wherein said cell line is deposited with the Collection Nationale de Microorganismes of the Pasteur Institut at Paris, under number I-588.
10. The monoclonal antibody of claim 1 wherein said cell line is deposited with the Collection Nationale de Microorganismes of the Pasteur Institut at Paris, under number I-589.

Claims for the following Contracting State : AT

1. A process of manufacturing a monoclonal antibody directed against a prosomal protein comprising: culturing a cell line deposited with the Collection Nationale de Microorganismes of the Pasteur Institut at Paris, under number I-588 or number I-589; and harvesting said monoclonal antibodies.

2. The process according to claim 1 characterized in that said cell line is deposited with the Collection Nationale de Microorganismes of the Pasteur Institut at Paris, under number I-588.

3. The process according to claim 1 characterized in that the cell line is that deposited with the Collection Nationale de Microorganismes of the Pasteur Institut at Paris, under number I-589.

4. A process of manufacturing a diagnostic reagent comprising: coupling a monoclonal antibody produced by a cell line deposited with the Collection Nationale de Microorganismes of the Pasteur Institut at Paris, under number I-588 or number I-589 with a label.

5. The process according to claim 4 characterized in that said cell line is deposited with the Collection Nationale de Microorganismes of the Pasteur Institut at Paris, under number I-588.

6. The process according to claim 4 characterized in that the cell line is that deposited with the Collection Nationale de Microorganismes of the Pasteur Institut at Paris, under number I-589.

Revendications

Revendications pour les Etats contractants suivants : BE, CH, DE, FR, GB, IT, LI, LU, NL, SE

1. Anticorps monoclonal dirigé contre une protéine prosomale, ledit anticorps monoclonal étant produit par une lignée cellulaire déposée à la Collection Nationale de Micro-organismes de l'Institut Pasteur à Paris, sous le numéro I-588 ou le numéro I-589.

2. Lignée cellulaire immortalisée produisant un anticorps monoclonal selon la revendication 1.

3. Réactif de diagnostic comprenant un anticorps monoclonal produit par une lignée cellulaire selon la revendication 2 couplé à un marqueur.

4. Procédé pour détecter un phénomène en rapport avec un prosome dans un échantillon, consistant à :

faire incuber ledit échantillon avec des anticorps monoclonaux produits par une lignée cellulaire déposée à la Collection Nationale de Micro-organismes de l'Institut Pasteur à Paris, sous le numéro I-588 ou le numéro I-589, lesdits anticorps monoclonaux étant dirigés contre une protéine prosomale, et étant directement ou indirectement pourvus d'un mar-

queur, puis

déterminer, grâce à l'activité du marqueur, la liaison desdits anticorps monoclonaux marqués à la protéine prosomale.

5. Procédé pour détecter une affection en rapport avec un prosome dans un échantillon, consistant à :

faire incuber ledit échantillon avec des anticorps monoclonaux produits par une lignée cellulaire déposée à la Collection Nationale de Micro-organismes de l'Institut Pasteur à Paris, sous le numéro I-588 ou le numéro I-589, lesdits anticorps monoclonaux étant dirigés contre une protéine prosomale, et étant directement ou indirectement pourvus d'un marqueur, puis

déterminer, grâce à l'activité du marqueur, la liaison desdits anticorps monoclonaux marqués à la protéine prosomale.

6. Procédé pour détecter un phénomène en rapport avec un prosome dans un échantillon, consistant à :

faire incuber ledit échantillon avec un premier lot d'anticorps monoclonaux produits par une lignée cellulaire déposée à la Collection Nationale de Micro-organismes de l'Institut Pasteur à Paris, sous le numéro I-588 ou le numéro I-589 ; puis

faire incuber ledit échantillon avec des anticorps monoclonaux marqués dirigés contre lesdits premiers anticorps monoclonaux ; puis déterminer, grâce à l'activité du marqueur, la liaison desdits anticorps monoclonaux marqués aux premiers anticorps monoclonaux.

7. Procédé selon la revendication 4, la revendication 5 ou la revendication 6, dans lequel ladite lignée cellulaire est déposée à la Collection Nationale de Micro-organismes de l'Institut Pasteur à Paris, sous le numéro I-588.

8. Procédé selon la revendication 4, la revendication 5 ou la revendication 6, dans lequel ladite lignée cellulaire est déposée à la Collection Nationale de Micro-organismes de l'Institut Pasteur à Paris, sous le numéro I-589.

9. Anticorps monoclonal selon la revendication 1, dans lequel ladite lignée cellulaire est déposée à la Collection Nationale de Microorganismes de l'Institut Pasteur à Paris, sous le numéro I-588.

10. Anticorps monoclonal selon la revendication 1, dans lequel ladite lignée cellulaire est déposée à la Collection Nationale de Microorganismes

de l'Institut Pasteur à Paris, sous le numéro I-589.

Revendications pour l'Etat contractant suivant : AT

1. Procédé de préparation d'un anticorps monoclonal dirigé contre une protéine prosomale, consistant à : cultiver une lignée cellulaire déposée à la Collection Nationale de Micro-organismes de l'Institut Pasteur à Paris, sous le numéro I-588 ou le numéro I-589 ; et récolter lesdits anticorps monoclonaux. 5
2. Procédé selon la revendication 1, caractérisé par le fait que ladite lignée cellulaire est déposée à la Collection Nationale de Micro-organismes de l'Institut Pasteur à Paris, sous le numéro I-588. 10
3. Procédé selon la revendication 1, caractérisé par le fait que ladite lignée cellulaire est déposée à la Collection Nationale de Micro-organismes de l'Institut Pasteur à Paris, sous le numéro I-589. 15
4. Procédé de fabrication d'un réactif de diagnostic consistant à : coupler avec un marqueur un anticorps monoclonal produit par une lignée cellulaire déposée à la Collection Nationale de Micro-organismes de l'Institut Pasteur à Paris, sous le numéro I-588 ou le numéro I-589. 20
5. Procédé selon la revendication 4, caractérisé par le fait que ladite lignée cellulaire est déposée à la Collection Nationale de Micro-organismes de l'Institut Pasteur à Paris, sous le numéro I-588. 25
6. Procédé selon la revendication 4, caractérisé par le fait que ladite lignée cellulaire est déposée à la Collection Nationale de Micro-organismes de l'Institut Pasteur à Paris, sous le numéro I-589. 30
7. Procédé selon la revendication 4, caractérisé par le fait que ladite lignée cellulaire est déposée à la Collection Nationale de Micro-organismes de l'Institut Pasteur à Paris, sous le numéro I-588. 35
8. Procédé selon la revendication 4, caractérisé par le fait que ladite lignée cellulaire est déposée à la Collection Nationale de Micro-organismes de l'Institut Pasteur à Paris, sous le numéro I-589. 40
9. Procédé selon la revendication 4, caractérisé par le fait que ladite lignée cellulaire est déposée à la Collection Nationale de Micro-organismes de l'Institut Pasteur à Paris, sous le numéro I-588. 45

Patentansprüche

Patentansprüche für folgende Vertragsstaaten : BE, CH, DE, FR, GB, IT, LI, LU, NL, SE

1. Monoclonale Antikörper, gerichtet gegen ein prosomales Protein, wobei dieser monoclonale Antikörper erzeugt ist durch eine Zell-Linie, welche bei der Collection Nationale de Micro-organismes des Pasteur Institutes in Paris unter der Nummer I-588 oder Nummer I-589 hinterlegt ist. 50
2. Immortalisierte Zell-Linie, welche einen mono- 55

clonalen Antikörper gemäss Anspruch 1 erzeugt.

3. Diagnosemittel, enthaltend einen monoclonalen Antikörper, welcher durch eine Zell-Linie gemäss Anspruch 2 erzeugt ist, gekuppelt an eine Markierung. 5
4. Verfahren zum Nachweis eines mit einem Prosomom zusammenhängenden Phänomens in einer Probe, gekennzeichnet durch: 10
 - das Inkubieren der Probe mit monoclonalen Antikörpern, welche durch eine bei der Collection Nationale de Microorganismes des Pasteur Institutes in Paris unter der Nummer I-588 oder Nummer I-589 hinterlegten Zell-Linie erzeugt sind, wobei diese monoclonalen Antikörper gegen ein prosomales Protein gerichtet sind und direkt oder indirekt mit einer Markierung versehen sind, und anschliessende Bestimmung der Bindung dieser markierten monoclonalen Antikörper an das prosomale Protein mit Hilfe der Aktivität der Markierung. 15
5. Verfahren zum Nachweis einer mit Prosomen in Verbindung stehenden Störung in einer Probe, gekennzeichnet durch : 20
 - Inkubierung dieser Probe mit monoclonalen Antikörpern, welche durch eine bei der Collection Nationale de Microorganismes des Pasteur Institutes in Paris unter der Nummer I-588 oder Nummer I-589 hinterlegten Zell-Linie erzeugt sind, wobei die monoclonalen Antikörper gegen ein prosomales Protein gerichtet sind und direkt oder indirekt mit einer Markierung versehen sind und anschliessende Bestimmung der Bindung der markierten monoclonalen Antikörper an das prosomale Protein mit Hilfe der Aktivität der Markierung. 25
6. Verfahren zum Nachweis eines mit Prosomen in Verbindung stehenden Phänomens in einer Probe, gekennzeichnet durch: 30
 - Inkubierung dieser Probe mit einem ersten Set von monoclonalen Antikörpern, welche durch eine bei der Collection Nationale de Microorganismes des Pasteur Institutes in Paris unter der Nummer I-588 oder Nummer I-589 hinterlegten Zell-Linie erzeugt sind; anschliessende Inkubierung dieser Probe mit markierten monoclonalen Antikörpern, welche gegen die ersten monoclonalen Antikörper gerichtet sind; und anschliessende Bestimmung der Bindung der markierten monoclonalen Antikörper an die ersten monoclonalen Antikörper mit Hilfe der Aktivität der Markierung. 35
7. Verfahren nach Anspruch 4, Anspruch 5 oder 35

Anspruch 6, dadurch gekennzeichnet, dass die Zell-Linie bei der Collection Nationale de Microorganismes des Pasteur Institutes in Paris unter der Nummer I-588 hinterlegt ist.

8. Verfahren nach Anspruch 4, Anspruch 5 oder Anspruch 6, dadurch gekennzeichnet, dass die Zell-Linie bei der Collection Nationale de Microorganismes des Pasteur Institutes in Paris unter der Nummer I-589 hinterlegt ist.

9. Das monoclonale Antikörper nach Anspruch 1, dadurch gekennzeichnet, dass die Zell-Linie bei der Collection Nationale de Microorganismes des Pasteur Institutes in Paris unter der Nummer I-588 hinterlegt ist.

10. Das monoclonale Antikörper nach Anspruch 1, dadurch gekennzeichnet, dass die Zell-Linie bei der Collection Nationale de Microorganismes des Pasteur Institutes in Paris unter der Nummer I-589 hinterlegt ist.

Patentansprüche für folgende Vertragsstaat :
AT

1. Verfahren zur Herstellung eines monoclonalen Antikörpers, welcher gegen ein prosomales Protein gerichtet ist, gekennzeichnet durch die Züchtung einer bei der Collection Nationale de Microorganismes des Pasteur Institutes in Paris unter der Nummer I-588 oder Nummer I-589 hinterlegten Zell-Linie und Gewinnung der monoclonalen Antikörper.

2. Verfahren nach Anspruch 1, dadurch gekennzeichnet, dass die Zell-Linie bei der Collection Nationale de Microorganismes des Pasteur Institutes in Paris unter der Nummer I-588 hinterlegt ist.

3. Verfahren nach Anspruch 1, dadurch gekennzeichnet, dass die Zell-Linie diejenige ist, welche bei der Collection Nationale de Microorganismes des Pasteur Institutes in Paris unter der Nummer I-589 hinterlegt ist.

4. Verfahren zur Herstellung eines diagnostischen Mittels, gekennzeichnet durch : Kupplung eines monoclonalen Antikörpers, welcher durch eine bei der Collection Nationale de Microorganismes des Pasteur Institutes in Paris unter der Nummer I-588 oder Nummer I-589 hinterlegten Zell-Linie erzeugt ist, mit einer Markierung.

5. Verfahren nach Anspruch 4, dadurch gekennzeichnet, dass die Zell-Linie bei der Collection

Nationale de Microorganismes des Pasteur Institutes in Paris unter der Nummer I-588 hinterlegt ist.

6. Verfahren nach Anspruch 4, dadurch gekennzeichnet, dass die Zell-Linie diejenige ist, welche bei der Collection Nationale de Microorganismes des Pasteur Institutes in Paris unter der Nummer I-589 hinterlegt ist.

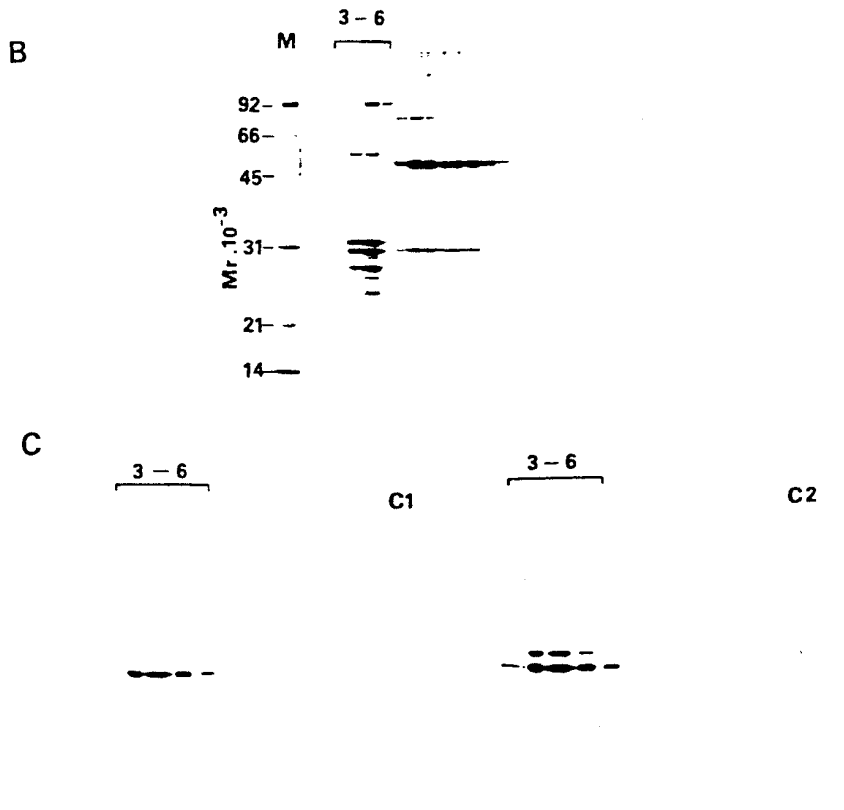
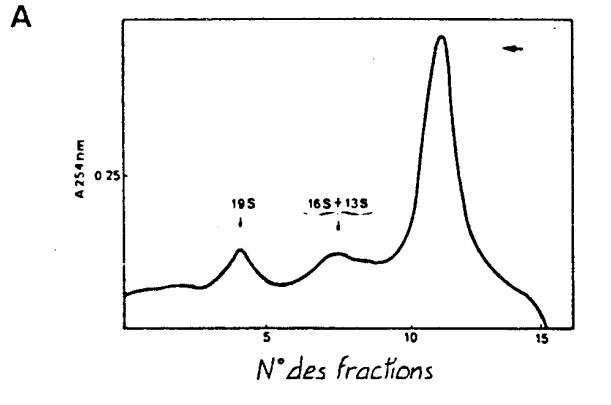
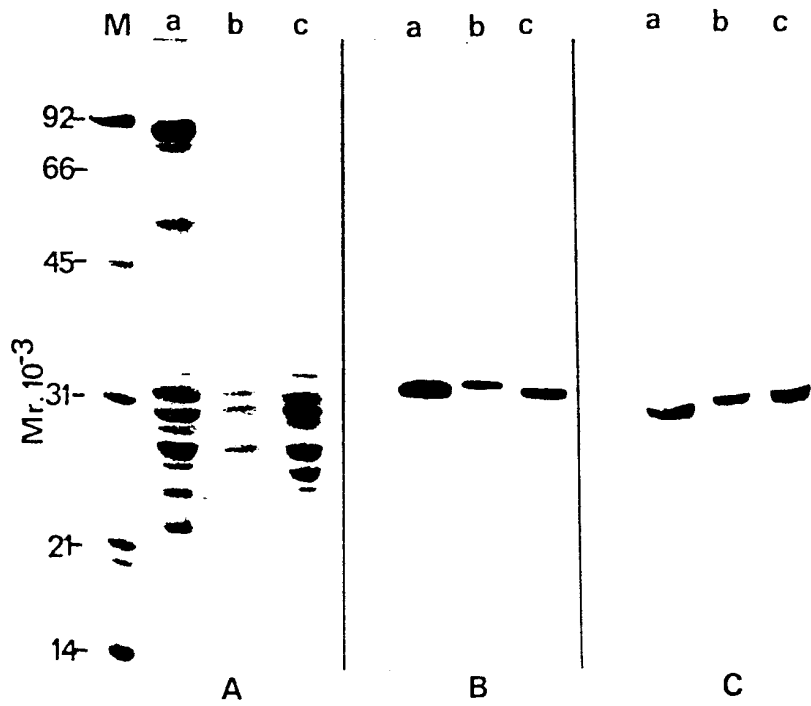


Fig. 1



F-19-2

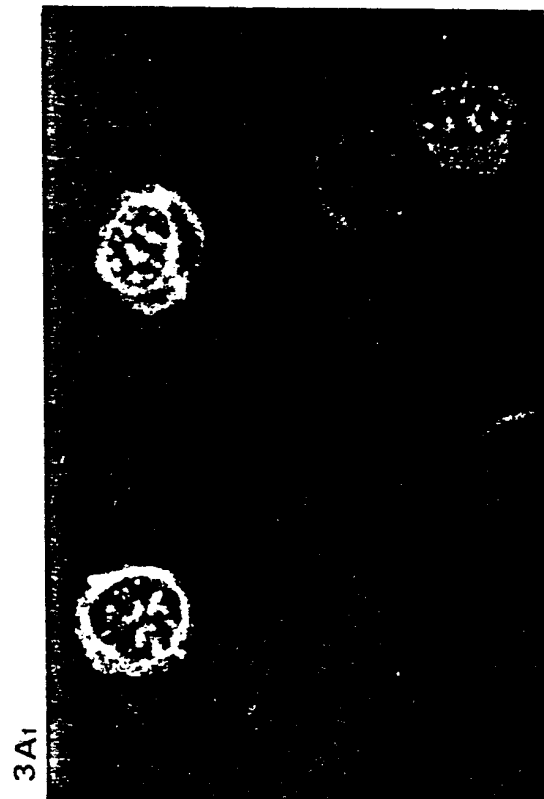
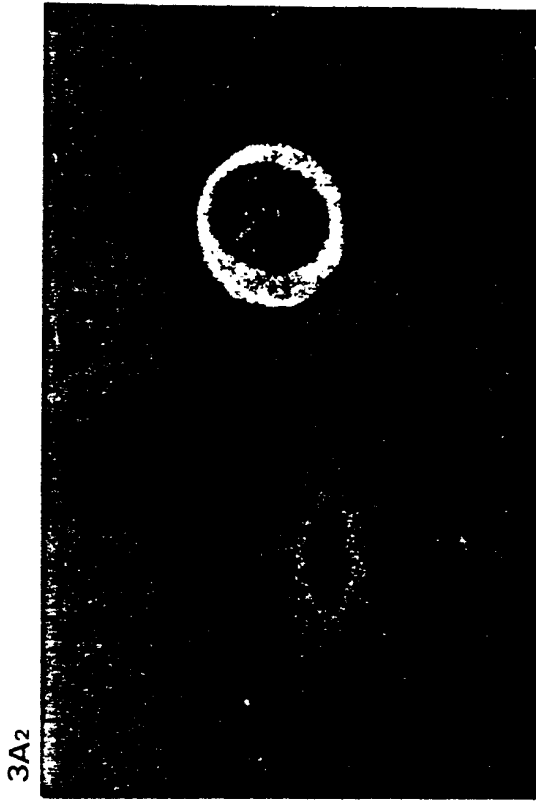


Fig. 3

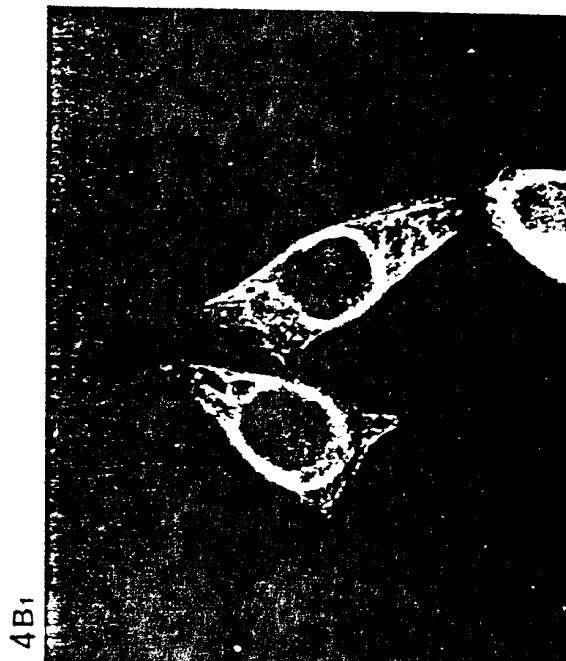
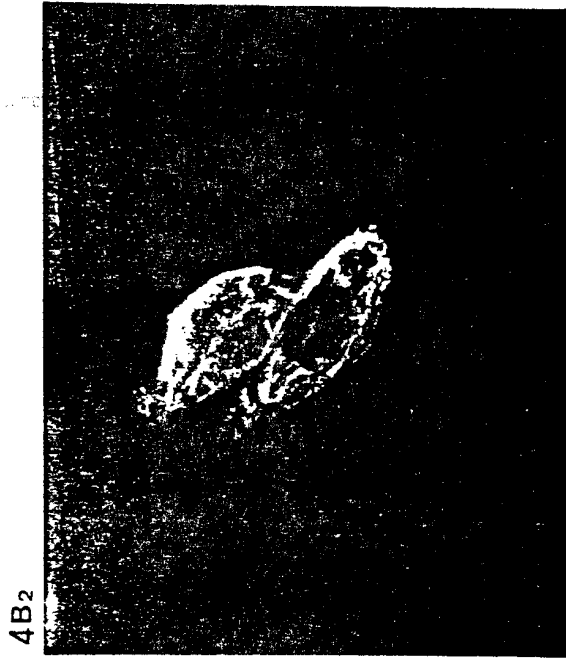


Fig-4